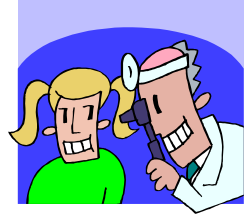




Mobile Clinic on Wheels “Care Force One” Health Van from



Presbyterian Intercommunity Hospital

<p>@ Whittier High School (North of Library in Horseshoe, Enter thru Library on Whittier Ave)</p> <p>Dates September 23, 2010 October 28, 2010 December 23, 2010 January 27, 2011 February 24, 2011 March 24, 2011 April 28, 2011 May 26, 2011 June 23, 2011 July 28, 2011 August 25, 2011</p> <p>8:30 am to 2:30 pm</p>	<p>@ Sierra Education Center (By the Track)</p> <p>Dates September 14, 2010 October 12, 2010 November 09, 2010 December 14, 2010 January 11, 2011 February 08, 2011 March 08, 2011 April 12, 2011 May 10, 2011 June 14, 2011 July 12, 2011 August 09, 2011</p> <p>8:30 am to 2:30 pm</p>	<p>@ Santa Fe High School (First Baptist Church Parking Lot)</p> <p>Dates September 28, 2010 October 26, 2010 November 23, 2010 December 28, 2010 January 25, 2011 February 22, 2011 March 22, 2011 April 26, 2011 May 24, 2011 June 28, 2011 July 26, 2011 August 23, 2011</p> <p>8:30 am to 2:30 pm</p>	<p>@ Pioneer High School (Parking Lot Corner of Pioneer & Washington Blvd)</p> <p>Dates September 02, 2010 October 07, 2010 November 04, 2010 December 02, 2010 January 06, 2011 February 03, 2011 March 03, 2011 April 07, 2011 May 05, 2011 June 02, 2011 July 07, 2011 August 04, 2011</p> <p>8:30 am to 2:30 pm</p>	<p>@ California High School (Hawes Parking Lot)</p> <p>Dates September 17, 2010 October 15, 2010 November 19, 2010 December 17, 2010 January 21, 2011 February 18, 2011 March 18, 2011 April 15, 2011 May 20, 2011 June 17, 2011 July 15, 2011 August 19, 2011</p> <p>8:30am to 2:30pm</p>
---	---	--	---	---

Services Provided:

All Immunizations, TB Test (no appointment needed)

Physicals, Sports Physicals, Sick Visit Exams, Well Child Exams (appointment needed 562-698-0811 ext. 14273)

For: Students, Parents of Students, Siblings of Students, Infants and Children of Students

Minimal charge for some services. Dates subject to change due to school holidays & Care Force One availability.

REMINDERS

1. Please bring Yellow Immunization Card or School Records with you if receiving Immunizations/Vaccines
2. Students under 18 years of age need parental consent for Immunizations/Physicals/Sports Physicals (parents may come with student or provide written consent). Written consent may consist of a note from a parent stating they give consent for the needed immunizations or physical.
3. Please be sure to let school staff know you will be attending this event so you are accounted for.

PIH Presbyterian Intercommunity Hospital

ATTENTION

In order to reduce some of our costs in bringing "Care Force One" to you we will be charging a small fee for the following services effective January 2011

Adoption Physical & Form Completion	\$10.00 with TB \$15.00
Adult – Sick Call	\$10.00 (may include antibiotic prescription injection)
Adult Influenza Vaccine	\$5.00 (non-insured) \$10.00 (insured)
Adult Vaccines: TDap, Pneumovax, Hep B	\$10.00 (non-insured)
Adult TB Test	\$10.00
Blood Pressure	No Charge
Child: Sick Call	\$10.00 (non-insured)
Child: TB Only	\$5.00
Child: TB with Physical	No Charge
Child: School Vaccinations for the Enrolled	No Charge
Cholesterol	\$15.00
DMV Physical & Form Completion	\$10.00
Foster Home Physical + TB	\$10.00
Height/Weight/Vision/Hearing	No Charge
Pregnancy Test	\$5.00
R.O.P. Physical & TB Test/Form Completion	\$10.00 with TB \$15.00
Replacement of Immunization Record	\$5.00
Screening Exam: Glucose/Cholesterol/BP	\$20.00
Sports Physicals	\$10.00
Sugar (Glucose)	\$5.00
Suture/Staple Removal	\$5.00
Work Physicals/Form Completion	\$10.00 with TB \$15.00
Wound Care	\$15.00 (one time fee)

If you have insurance, we will give you a receipt to send to your insurance company as they may reimburse you. If you need assistance or counseling with respect to the above fees, please speak to our staff. **YOUR PRIVACY IS IMPORTANT TO US.** Thank you.